



## EO- DL6-6X1W

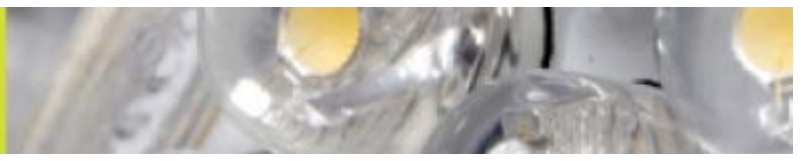


SPECIFICATIONS	
Product Code	EO-DL6-6V1W
Input Voltage	AC 240V
Power Consumption	6W
Beam angle	15°, 30°, 45°, 60°
Cut Out	90mm
Intensity of Light Output	6W Warm White for 480-510 lumen; 6W Cool White for 540-570 lumen;
Colour Temperature	Cool white(6000-6500k), Natural white(4000-4500k), Warm white(2700-3200k)(R/G/B/W/Y available)
Ambient Humidity	85%
Rendering Index	Ra=80.0
Operating Temperature	<65°C
Safety Assurance	CE and RoHS
Material	PMMA, Aluminium Alloy
Expected Life	30,000-50,000 hours
Warranty	2 year
Application	It can be used for stages, shopping malls, guesthouses, hotels, museums, art galleries, meeting rooms, exhibitions ect

### Features

- No UV or IR Radiation
- Low Power Consumption
- Long lived performance
- Even Lighting, Non-halation, High intensity
- Unique Radiation Design
- Constant current circuit
- Safe and easy to assemble
- With Power Supply Adapter

Specifications subject to change without notice

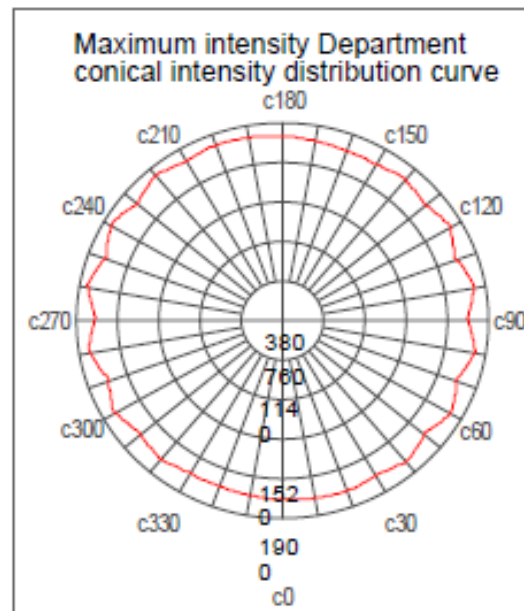
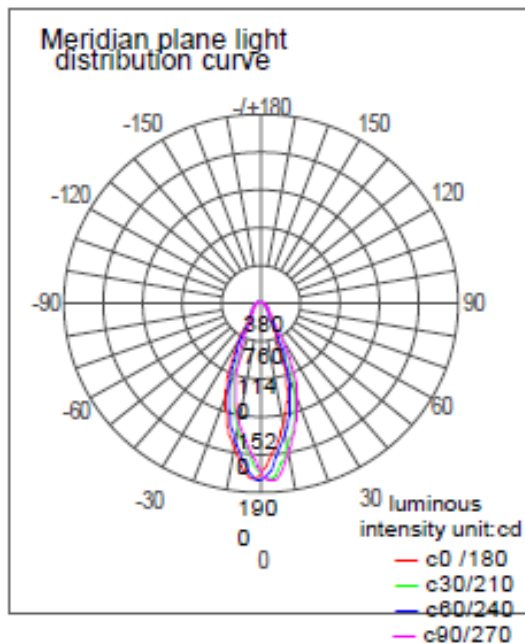




LED lamp Luminosity data

LED lamp description		
Name:PAR30-14W	Dimension:D95mmXH97mm	Weight:246G
Type:PAR30 LED Light	Rated voltage:AC240V	Rated wattage:13.3W
LED Type:CREE LED	LED specifications:CREE LED	Standard of luminous flux:860LM
LED quantity:7 PCS	Radiation buccofacial apraxia:	Test No:20100818002

Lights actual measurement data			
voltage:AC240V	current:400mA	power:13.3W	Power Factor:0.75
Total luminous flux of	890	Half-intensity angle	36°
Light efficiency	0	Beam Angle	61°
Peak intensity	1800.6 cd	Roadside up	0
Peak intensity	(0.0°, 80.0°)	Roadside down	481
UWLR	0	House edge up	0
DWLR	100	House edge down	408
Flashed area (76°)	0	Discomfort glare (SLI)	0



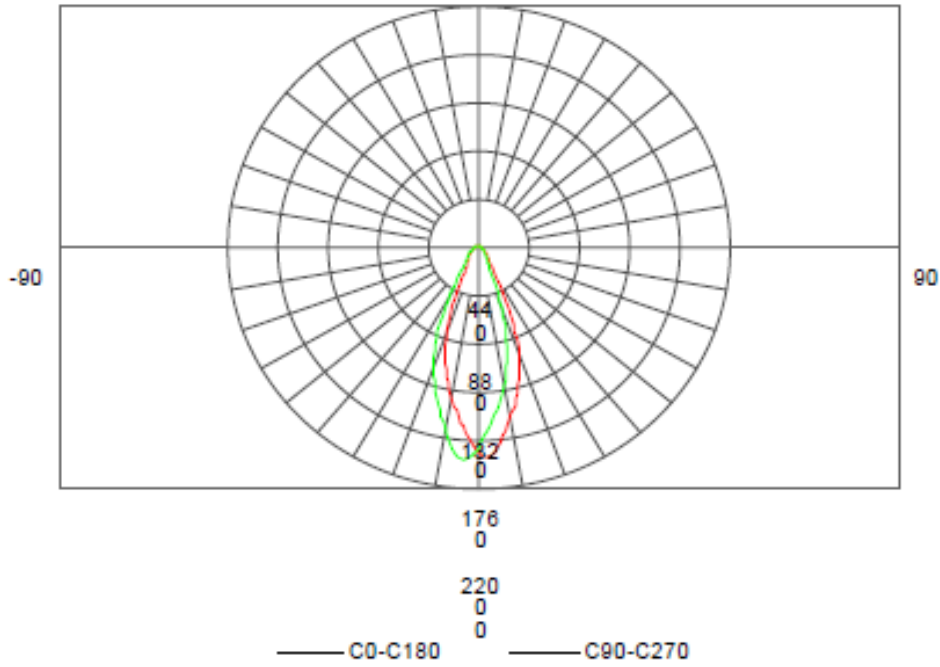
cAngle range : 0- 360degree      YAngle: 0 -90 degree  
 canglespacing: 10 degree      Yangle spacing: 0.9 degree  
 environmentaltemperture: 25℃  
 environment humidity: 65%

Test Speed :Fast      Test distance:0 m  
 Tester:Mr huang      remark: Test Date : 2010-08-19

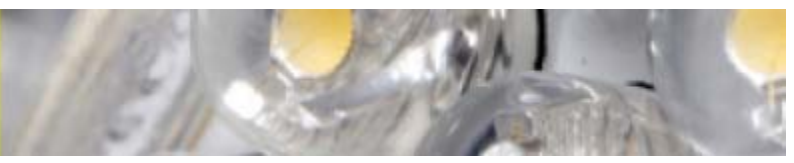
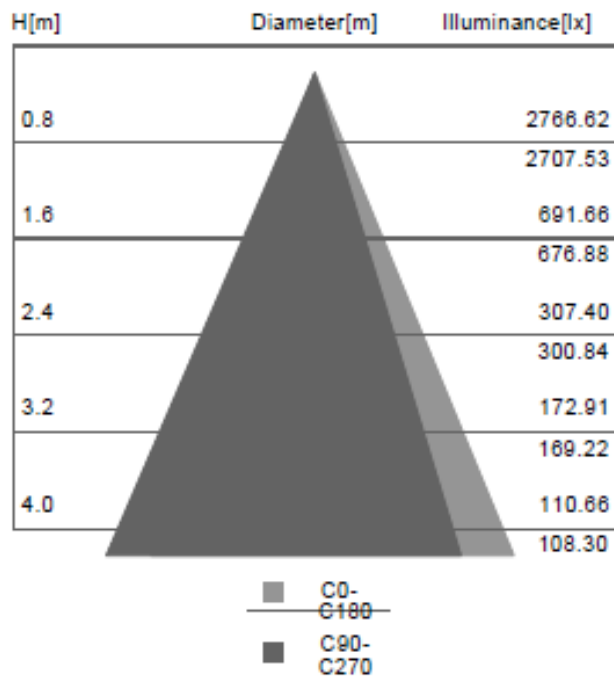




cd/1000  
ImChart



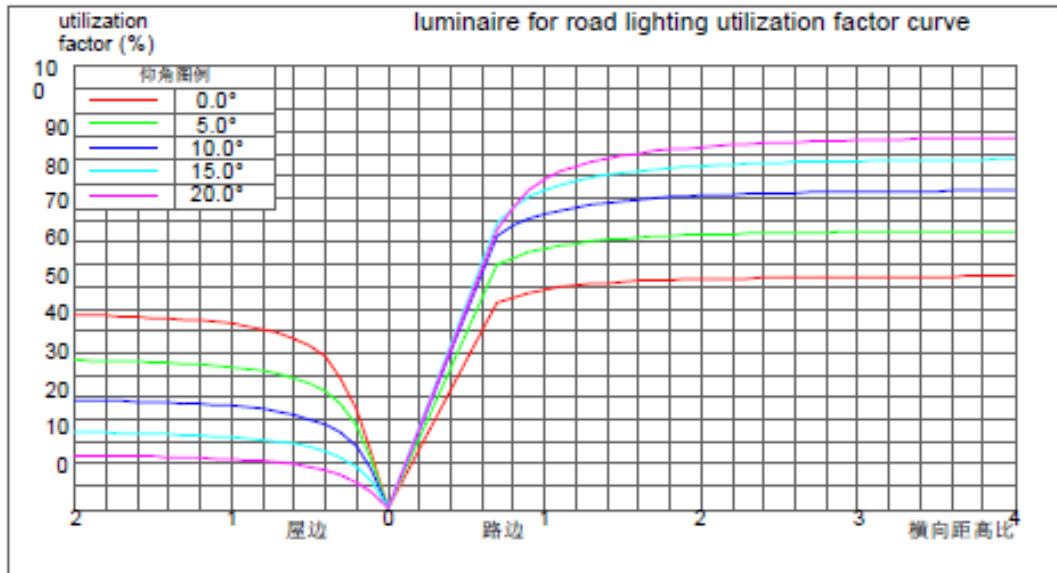
Lux cone chart





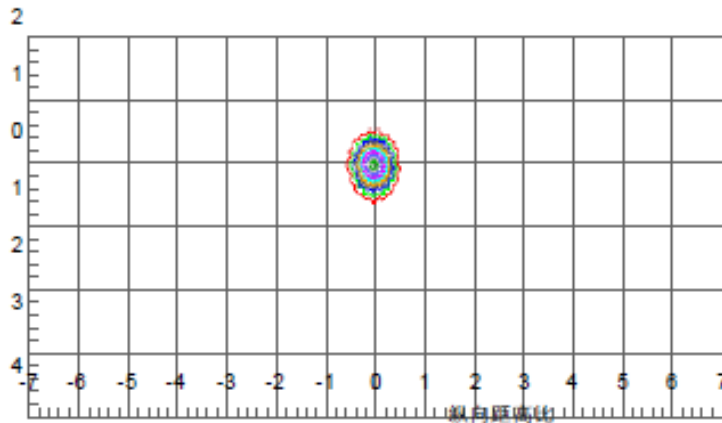


Lamps and lanterns utilization factor curve



level Absolutely illumination curve

calculate height 4.00 m, Vertical lamp illumination 108.3 lx  
If the installation height is not equal to calculation height, please apply for the right high illuminance correction factor chart to calculate Lux2



— (95%)102.89 — (90%)97.47 — (80%)86.64 — (70%)75.81 — (60%)64.98  
— (50%)54.15 — (40%)43.32 — (30%)32.49 — (20%)21.66 — (10%)10.83

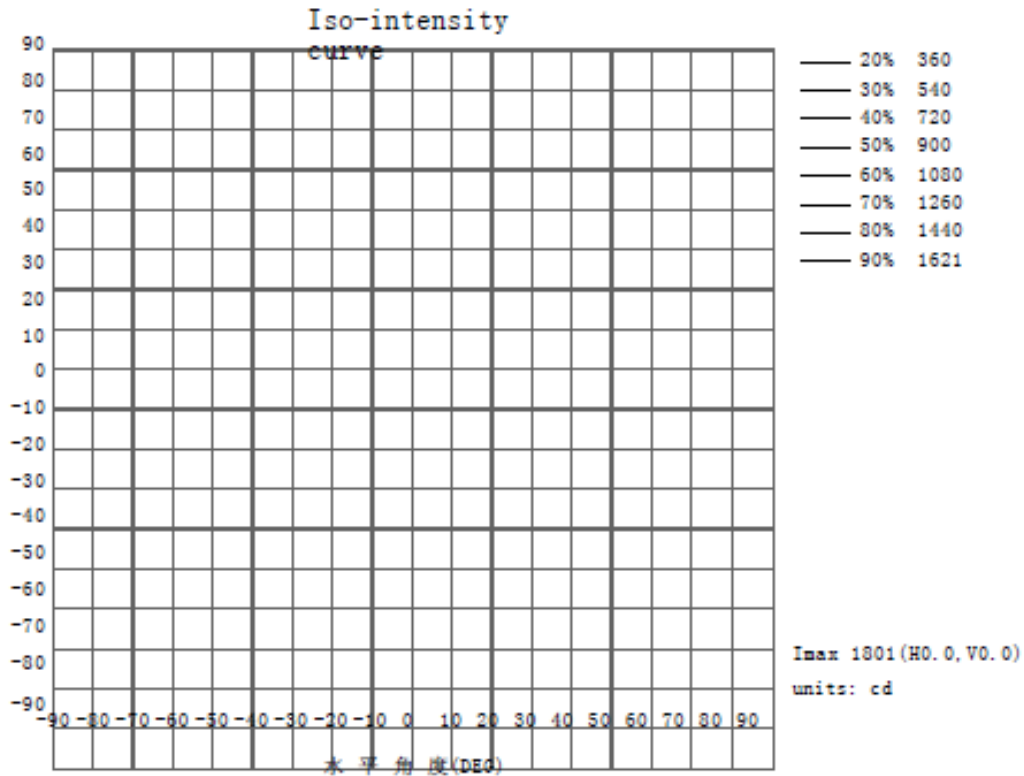






light Iso-intensity curve

LED lamp description		
Name:PAR30-14W	Dimension:D85mmXH97mm	Weight:246G
Type:PAR30 LED Light	Rated voltage:AC240V	Rated wattage:13.3W
LED Type:CREE LED	LED specifications:CREE LED	Standard of luminous flux:860LM
LED quantity:7 PCS	Radiation buccofacial apraxia:	Test No.:20100818002



cAngle range : 0-360degree      VAngle: 0-90 degree      environmentaltemperture: 25℃  
 canglespacing: 10 degree      Vangle spacing: 0.9 degree      environment humidity: 65%  
 Test      Test distand:0 m  
 Speed :Fast      remark: Test Date : 2010-08-19  
 Tester:Mr huang



